

型号规格

药物球囊扩张导管型号规格表 (兼容0.018" 导丝)

型号规格			球囊直径 (mm)	球囊长度 (mm)	名义压力 (atm)	额定爆破压力 (atm)	可通过鞘管直径 (F)
导管有效长度 90cm	导管有效长度 130cm	导管有效长度 150cm					
DEB20020090	/	DEB20020150	20	2.0	6	14	5
DEB20040090	/	DEB20040150	40				
DEB20060090	/	DEB20060150	60				
DEB20080090	/	DEB20080150	80				
DEB20100090	/	DEB20100150	100				
DEB20120090	/	DEB20120150	120				
DEB20150090	/	DEB20150150	150				
DEB20220090	/	DEB20220150	220				
DEB25020090	/	DEB25020150	20				
DEB25040090	/	DEB25040150	40				
DEB25060090	/	DEB25060150	60				
DEB25080090	/	DEB25080150	80				
DEB25100090	/	DEB25100150	100				
DEB25120090	/	DEB25120150	120				
DEB25150090	/	DEB25150150	150				
DEB25220090	/	DEB25220150	220				
DEB30020090	/	DEB30020150	20				
DEB30040090	/	DEB30040150	40				
DEB30060090	/	DEB30060150	60				
DEB30080090	/	DEB30080150	80				
DEB30100090	/	DEB30100150	100				
DEB30120090	/	DEB30120150	120				
DEB30150090	/	DEB30150150	150				
DEB30220090	/	DEB30220150	220				
DEB35020090	/	DEB35020150	20				
DEB35040090	/	DEB35040150	40				
DEB35060090	/	DEB35060150	60				
DEB35080090	/	DEB35080150	80				
DEB35100090	/	DEB35100150	100				
DEB35120090	/	DEB35120150	120				
DEB35150090	/	DEB35150150	150				
DEB35220090	/	DEB35220150	220				

型号规格			球囊直径 (mm)	球囊长度 (mm)	名义压力 (atm)	额定爆破压力 (atm)	可通过鞘管直径 (F)
导管有效长度 90cm	导管有效长度 130cm	导管有效长度 150cm					
DEB40020090	DEB40020130	DEB40020150	20	4.0	6	14	5
DEB40040090	DEB40040130	DEB40040150	40				
DEB40060090	DEB40060130	DEB40060150	60				
DEB40080090	DEB40080130	DEB40080150	80				
DEB40100090	DEB40100130	DEB40100150	100				
DEB40120090	DEB40120130	DEB40120150	120				
DEB40150090	DEB40150130	DEB40150150	150				
DEB40220090	DEB40220130	DEB40220150	220				
DEB50020090	DEB50020130	/	20				
DEB50040090	DEB50040130	/	40				
DEB50060090	DEB50060130	/	60				
DEB50080090	DEB50080130	/	80				
DEB50100090	DEB50100130	/	100				
DEB50120090	DEB50120130	/	120				
DEB50150090	DEB50150130	/	150				
DEB50220090	DEB50220130	/	220				
DEB60020090	DEB60020130	/	20				
DEB60040090	DEB60040130	/	40				
DEB60060090	DEB60060130	/	60				
DEB60080090	DEB60080130	/	80				
DEB60100090	DEB60100130	/	100				
DEB60120090	DEB60120130	/	120				
DEB60150090	DEB60150130	/	150				
DEB60220090	DEB60220130	/	220				
DEB70020090	DEB70020130	/	20				
DEB70040090	DEB70040130	/	40				
DEB70060090	DEB70060130	/	60				
DEB70080090	DEB70080130	/	80				
DEB70100090	DEB70100130	/	100				
DEB70120090	DEB70120130	/	120				
DEB70150090	DEB70150130	/	150				
DEB70220090	DEB70220130	/	220				

药物球囊扩张导管型号规格表 (兼容0.035" 导丝)

型号规格				球囊直径 (mm)	球囊长度 (mm)	名义压力 (atm)	额定爆破压力 (atm)	可通过鞘管直径 (F)
导管有效长度 40cm	导管有效长度 75cm	导管有效长度 135cm	导管有效长度 150cm					
DEBL30020040	DEBL30020075	/	DEBL30020150	20	3.0	6	14	5
DEBL30040040	DEBL30040075	/	DEBL30040150	40				
DEBL30060040	DEBL30060075	/	DEBL30060150	60				
DEBL30080040	DEBL30080075	/	DEBL30080150	80				
DEBL30100040	DEBL30100075	/	DEBL30100150	100				
DEBL30120040	DEBL30120075	/	DEBL30120150	120				
DEBL30150040	DEBL30150075	/	DEBL30150150	150				
DEBL30220040	DEBL30220075	/	DEBL30220150	220				
DEBL35020040	DEBL35020075	/	DEBL35020150	20				
DEBL35040040	DEBL35040075	/	DEBL35040150	40				
DEBL35060040	DEBL35060075	/	DEBL35060150	60				
DEBL35080040	DEBL35080075	/	DEBL35080150	80				
DEBL35100040	DEBL35100075	/	DEBL35100150	100				
DEBL35120040	DEBL35120075	/	DEBL35120150	120				
DEBL35150040	DEBL35150075	/	DEBL35150150	150				
DEBL35220040	DEBL35220075	/	DEBL35220150	220				
DEBL40020040	DEBL40020075	DEBL40020135	DEBL40020150	20	4.0	6	14	6
DEBL40040040	DEBL40040075	DEBL40040135	DEBL40040150	40				
DEBL40060040	DEBL40060075	DEBL40060135	DEBL40060150	60				
DEBL40080040	DEBL40080075	DEBL40080135	DEBL40080150	80				
DEBL40100040	DEBL40100075	DEBL40100135	DEBL40100150	100				
DEBL40120040	DEBL40120075	DEBL40120135	DEBL40120150	120				
DEBL40150040	DEBL40150075	DEBL40150135	DEBL40150150	150				
DEBL40220040	DEBL40220075	DEBL40220135	DEBL40220150	220				
DEBL50020040	DEBL50020075	DEBL50020135	/	20				
DEBL50040040	DEBL50040075	DEBL50040135	/	40				
DEBL50060040	DEBL50060075	DEBL50060135	/	60				
DEBL50080040	DEBL50080075	DEBL50080135	/	80				
DEBL50100040	DEBL50100075	DEBL50100135	/	100				
DEBL50120040	DEBL50120075	DEBL50120135	/	120				
DEBL50150040	DEBL50150075	DEBL50150135	/	150				
DEBL50220040	DEBL50220075	DEBL50220135	/	220				

型号规格				球囊直径 (mm)	球囊长度 (mm)	名义压力 (atm)	额定爆破压力 (atm)	可通过鞘管直径 (F)
导管有效长度 40cm	导管有效长度 75cm	导管有效长度 135cm	导管有效长度 150cm					
DEBL55020040	DEBL55020075	DEBL55020135	/	20	5.5	6	13	7
DEBL55040040	DEBL55040075	DEBL55040135	/	40				
DEBL55060040	DEBL55060075	DEBL55060135	/	60				
DEBL55080040	DEBL55080075	DEBL55080135	/	80				
DEBL55100040	DEBL55100075	DEBL55100135	/	100				
DEBL55120040	DEBL55120075	DEBL55120135	/	120				
DEBL55150040	DEBL55150075	DEBL55150135	/	150				
DEBL55220040	DEBL55220075	DEBL55220135	/	220				
DEBL60020040	DEBL60020075	DEBL60020135	/	20				
DEBL60040040	DEBL60040075	DEBL60040135	/	40				
DEBL60060040	DEBL60060075	DEBL60060135	/	60				
DEBL60080040	DEBL60080075	DEBL60080135	/	80				
DEBL60100040	DEBL60100075	DEBL60100135	/	100				
DEBL60120040	DEBL60120075	DEBL60120135	/	120				
DEBL60150040	DEBL60150075	DEBL60150135	/	150				
DEBL60220040	DEBL60220075	DEBL60220135	/	220				
DEBL65020040	DEBL65020075	DEBL65020135	/	20				
DEBL65040040	DEBL65040075	DEBL65040135	/	40				
DEBL65060040	DEBL65060075	DEBL65060135	/	60				
DEBL65080040	DEBL65080075	DEBL65080135	/	80				
DEBL65100040	DEBL65100075	DEBL65100135	/	100				
DEBL65120040	DEBL65120075	DEBL65120135	/	120				
DEBL65150040	DEBL65150075	DEBL65150135	/	150				
DEBL65220040	DEBL65220075	DEBL65220135	/	220				
DEBL70020040	DEBL70020075	DEBL70020135	/	20				
DEBL70040040	DEBL70040075	DEBL70040135	/	40				
DEBL70060040	DEBL70060075	DEBL70060135	/	60				
DEBL70080040	DEBL70080075	DEBL70080135	/	80				
DEBL70100040	DEBL70100075	DEBL70100135	/	100				
DEBL70120040	DEBL70120075	DEBL70120135	/	120				
DEBL70150040	DEBL70150075	DEBL70150135	/	150				
DEBL70220040	DEBL70220075	DEBL70220135	/	220				

型号规格表示方式: DEB/DEBL [XX] [XXX] [XXX]

示例: DEB/DEBL 30 220 150

导管有效长度为 150cm
球囊长度为 220mm
球囊直径为 3.0mm
产品代码

其中:

DEB 代表兼容 0.018" 导丝的药物球囊扩张导管
DEBL 代表兼容 0.035" 导丝的药物球囊扩张导管

R 无 E 不备, E 应俱全 warm



地址: 上海市·浦东新区·康新公路3399弄·1号楼(上海国际医学园区·医创园)
网址: www.endovastec.com 电话: (86) (21) 38139300
传真: (86) (21) 33750026 邮编: 201318



Reewarm® PTX

药物球囊扩张导管

兼容导丝 0.018"/0.035"

Leave nothing behind

专利立体式雾化喷涂工艺, 药物涂层均匀稳定

单次给药, 长期抑制

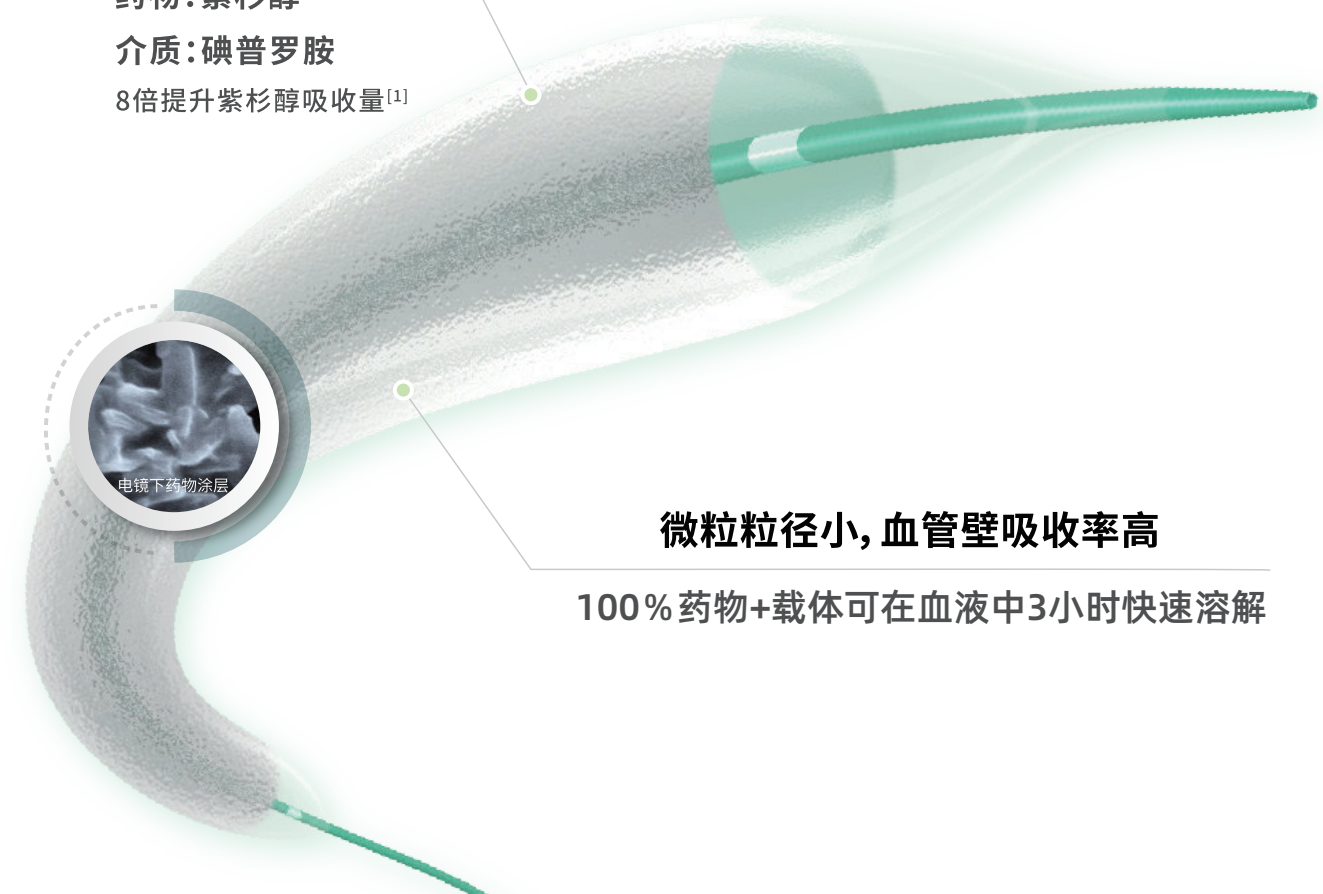
次要终点: 12个月免于靶病变血运重建率 (Freedom from All-TLR)

载药量: 3 μg/mm²

药物: 紫杉醇

介质: 碘普罗胺

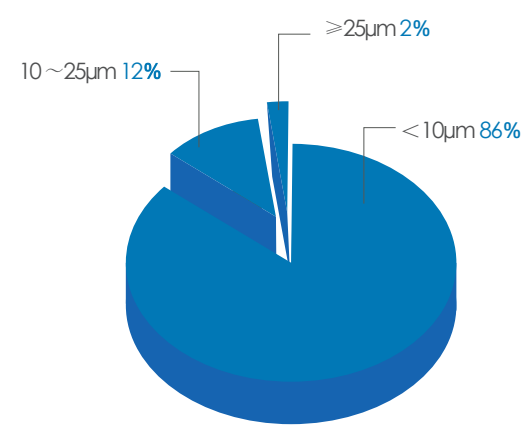
8倍提升紫杉醇吸收量^[1]



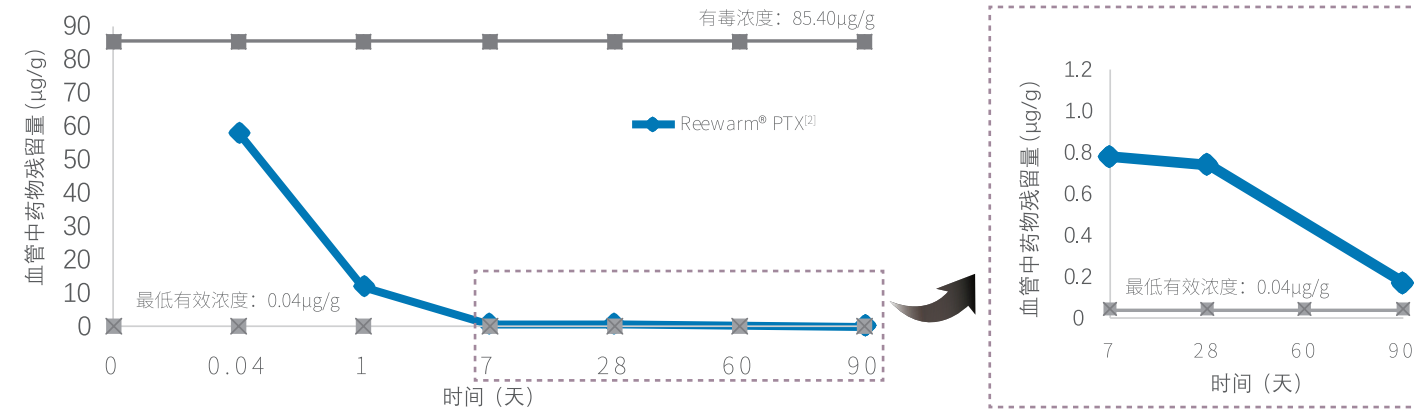
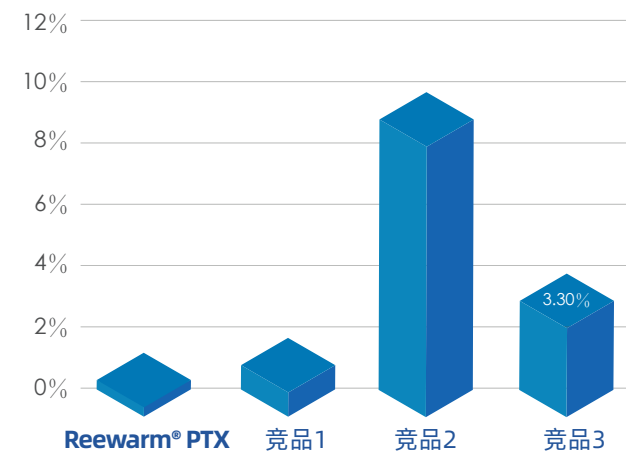
微粒粒径小, 血管壁吸收率高

100% 药物+载体可在血液中3小时快速溶解

[Reewarm® PTX 微粒粒径分布图]



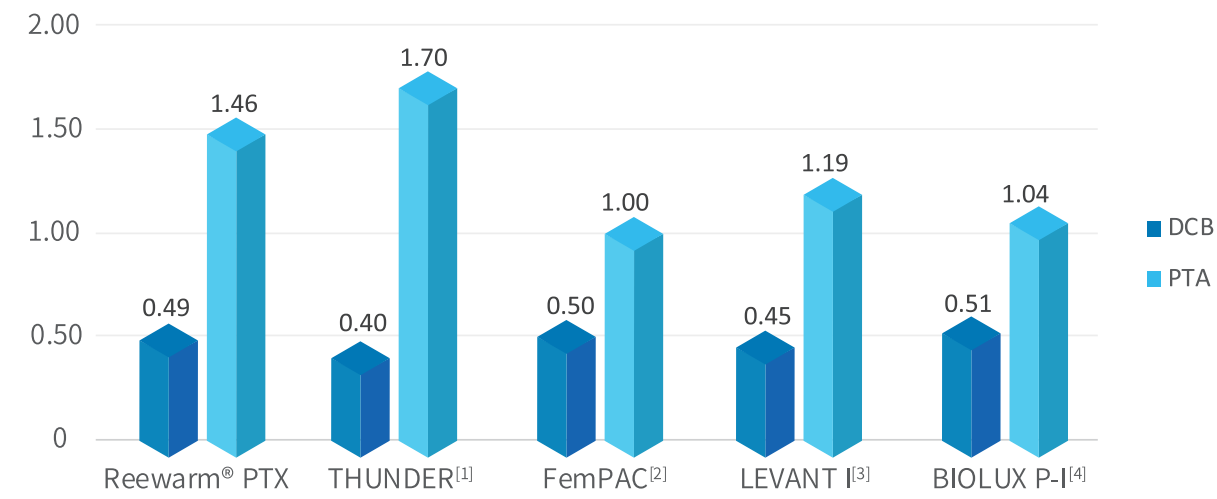
[≥50μm微粒占比]



[1] European Heart Journal (2003)24,1462-1467

[2] 通过动物实验测得

主要终点: 6个月靶病变晚期管腔丢失 (LLL)



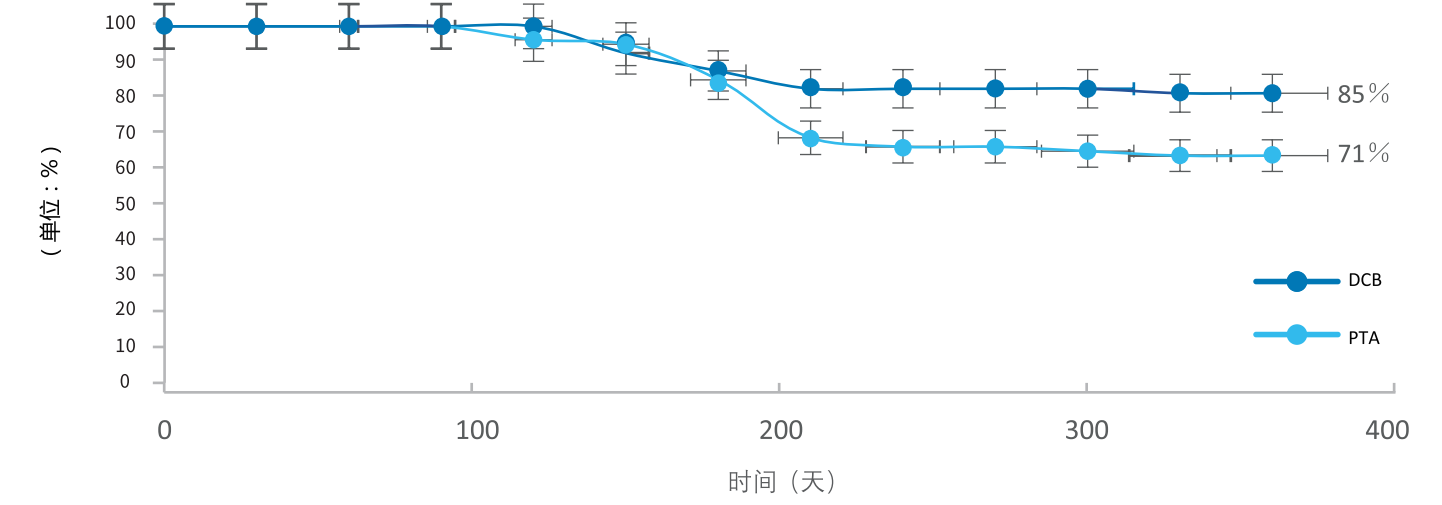
注: LLL定义为术后即刻靶血管最小管腔直径(MLD)与术后6个月靶血管MLD的差别。

[1] N Engl J Med 2008;358:689-699.

[2] Circulation 2008;118:1358-1365.

[3] JACC Cardiovasc Interv 2014;7:10-19.

[4] JEVT 2015;22:14-21.



与其他临床试验相比, Reewarm® PTX临床试验涵盖难度更高的病变

	Reewarm® PTX		THUNDER ^[1]		FemPAC ^[2]		LEVANT I ^[3]		BIOLUX P-I ^[4]	
	DCB	PTA	DCB	PTA	DCB	PTA	DCB	PTA	DCB	PTA
平均病变长度 (mm)	96±48	91±44	74±65		NA	NA	81±37	80±38	51±47	69±57
完全闭塞 (%)	49	55	27		19	13	41	42	38	

6个月随访亚组分析 (LLL)

